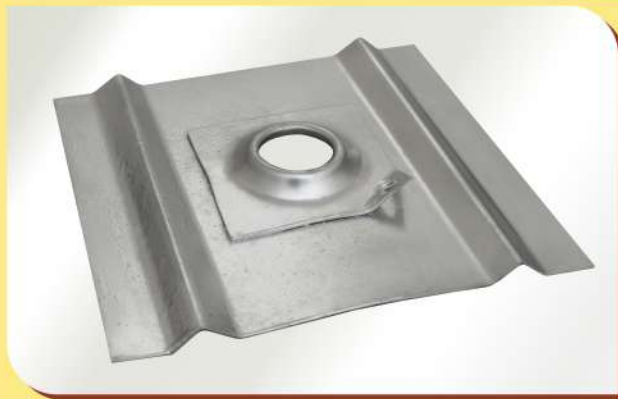


COMBI WASHERS & DOME PLATE

For Split Set / Friction Bolt
Black, Hot Dipped Galvanized & Zinc Electroplated Coating.

COMBI WASHER

DOG EAR DESIGN



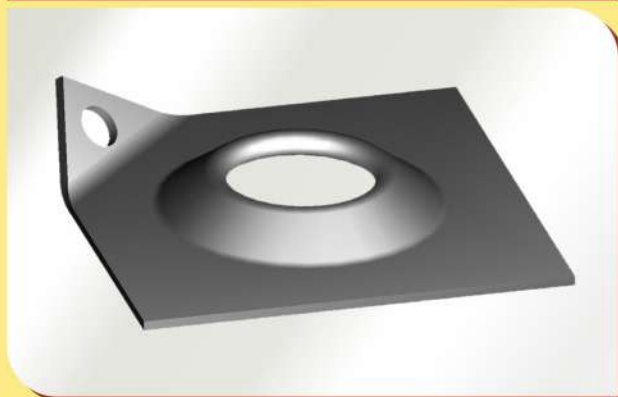
INVERTED 'V' DESIGN



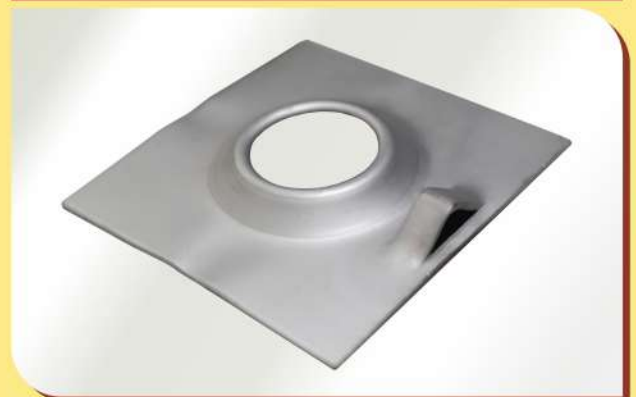
Size : 300 x 285 x 1.6mm
Fitted with 150 x 150 x 4mm or 125 x 125 x 4mm plate

DOMED BEARING PLATE

DOG EAR DESIGN



INVERTED 'V' DESIGN



Size : 150 x 150 x 4mm or 125 x 125 x 4mm plate